

CCEO E-briefs UPDATE ALERT

September 7, 2007

Issue #24a

Published by the Chamber of Commerce Executives of Ohio
Mark V'Soske, Chairman mvsoske@toledochamber.com
BJ Wiberg, President/CEO bwiberg.cceo@ohiochamber.com
www.ohiochamber.com/CCEO1

CCEO: *Fostering Excellence in Chamber Leadership since 1916.*

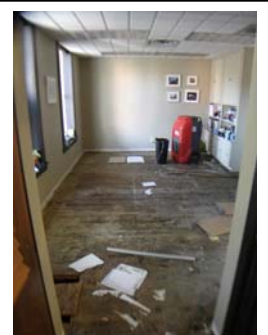
Current Status Flooded Chambers

As a result of last month's devastating storms, tornadoes and flooding, the following six counties were declared disaster areas: Allen, Crawford, Hancock, Putnam, Richland, and Wyandot.

To quickly assess the status of the chambers in those areas, we requested updates from our members. Through e-mail responses & subsequent follow-up phone calls as recently as yesterday, it appears that two of our members were hit especially bad: **Doug Peters** in Findlay and **Mary Jo Bockrath** in Ottawa.

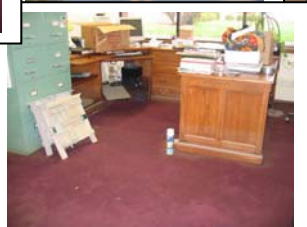


← Chamber's bldg. in Findlay →



Doug and his Findlay staff are currently operating out of a one-room apartment on the 2nd floor of the building which the chamber owns. Without flood insurance, their chamber is facing a major \$\$\$ challenge!

Ottawa Chamber



Mary Jo in Ottawa has found a temporary home for the chamber in the outskirts of town through the generosity of LAMAR Advertising, one of their member-investors. Although the chamber office was severely damaged, their landlord is hoping to have the building back on operation in a couple of months. Damage to the chamber's furniture and equipment is still being assessed.

HERE'S WHAT YOU CAN DO to help our colleagues:

Send a tax-deductible contribution to the *Findlay Foundation*, designated for either or both of these chambers, c/o Doug Peters, GreaterFindlay, Inc., 123 E. Main Cross St., Findlay, OH.

In addition to or in place of cash, both chambers have a need for furniture, equipment, supplies and services.

Contact Doug at dpeters@greaterfindlayinc.com and Mary Jo at (419) 523-3141 or ottawachamber@earthlink.net to find out what their specific needs are ... then put on your creative "chamber hat" to come up with a way to help them recover!

Chamber of Commerce Executives of Ohio – 230 E. Town St. – POB 15159 – Columbus, OH 43215
Phones: 614.228.4201 & 800.622.1893 Fax: 614.228.6403 cceo@ohiochamber.com
www.ohiochamber.com/cceo1

